

Valvola a doppio effetto regolabile

Adjustable double action relief valve
Einstellbare Unter und Überdruckventile
Soupape à double effet réglable
Valvula de doble efecto ajustable

 art. **44E**

AISI 304 - 316

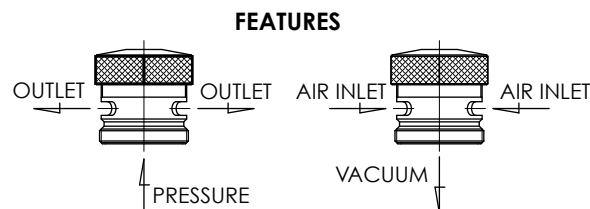
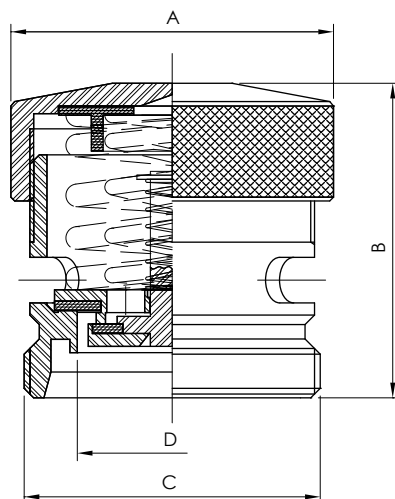
ART.	DN	A	B	C	D	Kg	PORTATA range
44 E - 1	40	80	92	65x1/6"	38	1.2	10 m ³ /h
44 E - 2	50	80	92	78x1/6"	50	1.4	15 m ³ /h
44 E - 3	80	128	180	110x1/6"	81	4.45	50 m ³ /h

SPECIFICHE TECNICHE:

- Corpo in AISI 304 - 316
- Tenuta in EPDM
- Pressione di apertura: 0.1/2 - 0,5/6 bar
- Depressione di apertura: -0.04 bar
- Scarto di chiusura: ≤ 20%
- Temperatura di esercizio: -20°C / +80°C
- Filetto DIN 11851

TECHNICAL SPECIFICATIONS:

- Body in AISI 304 - 316
- Seal in EPDM
- Opening pressure: 0.1/2 - 0,5/6 bar
- Vacuum pressure: -0.04 bar
- Closure gap: ≤ 20%
- Working temperature: -20°C / +80°C
- Male DIN 11851



Ver. 04.18

Valvola per vuoto

Vacuum valve spring loaded
Vakuumventil
Soupape à vide
Vàlvula de vacío

 art. **44F**

AISI 304 - 316

ART.	DN	D1	L	RdxS	Kg	PORTATA range
44 F - 1	50	80	95	78x1/6"	1.10	20 m ³ /h
44 F - 2	80	129	145	110x1/6"	3.35	50 m ³ /h

SPECIFICHE TECNICHE:

- Corpo in AISI 304 - 316
- Tenuta in silicone
- Depressione di apertura: 0.015 bar
- Scarto di chiusura: ≤ 20%
- Temperatura di esercizio: -50°C / +100°C
- Filetto DIN 11851

TECHNICAL SPECIFICATIONS:

- Body in AISI 304 - 316
- Seal in silicon
- Vacuum pressure: -0.015 bar
- Closure gap: ≤ 20%
- Working temperature -50°C / +100°C
- Male DIN 11851

